



For a Better Tomorrow  
**AISIN GROUP**

# AISIN PRODUCT LINE - CARD

## Cooling Products



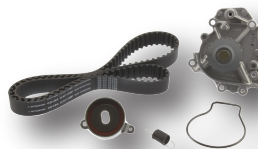
Water Pump



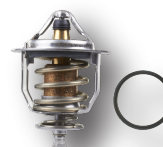
Electronic Water Pump



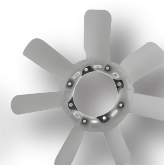
Inverter Water Pump



Water Pump Timing Belt Kit



Thermostat & Gaskets



Fan Blade



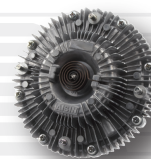
Engine Timing Cover Seal Kit



Hydraulic Tensioner

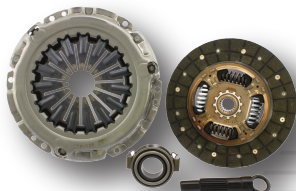


Fan Pulley



Fan Clutch

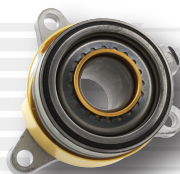
## Drive Train Products



Clutch Kit



Clutch Hydraulic



Concentric Slave Cylinder



Free Wheel Hub



ABS Speed Sensors



Shift Actuators



Ride Height Sensors



Auto. Transmission.  
Revolution Sensors

## Steering & Suspension



Rack & Pinion



Steering Gear



Power Steering Pump

**“Constantly Building Upon Our Own Innovations”**

For details and applications information, please review the data provided by AISIN, or your catalog provider, or visit us on our website: [www.aisinaftermarket.com](http://www.aisinaftermarket.com)

Please contact your AISIN sales representative for additional information.

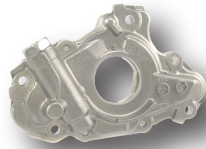
Distributed by



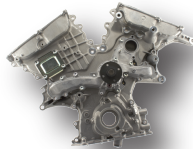
For a Better Tomorrow  
**AISIN GROUP**

# AISIN PRODUCT LINE - CARD

## Engine & Engine Management



Oil Pump



Timing Chain Cover



Engine Timing Chain



Vacuum Switching Valve

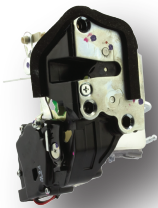


Oil Control Valve

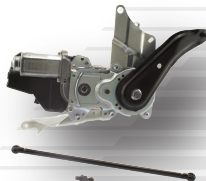


Electronic Throttle Body

## Body & Body Electronics



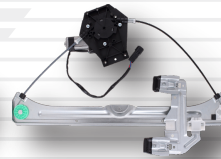
Door Actuator



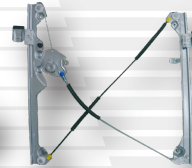
Power Back Door Actuator



Door Check



Power Window Motor  
& Regulator Assembly



Window Regulator



Power Window  
Regulator Assembly

## Chemicals & Fluids



Automatic & CVT Fluids



Coolant



ATFs in 55-Gallon



Form - In - Place - Gasket